

CERTIFICATE OF LOCATION OF GOVERNMENT CORNER

NORTHEAST Corner of Section 35, Township 105, Range 43, 5TH P.M.

STATE OF MINNESOTA, County of MURRAY

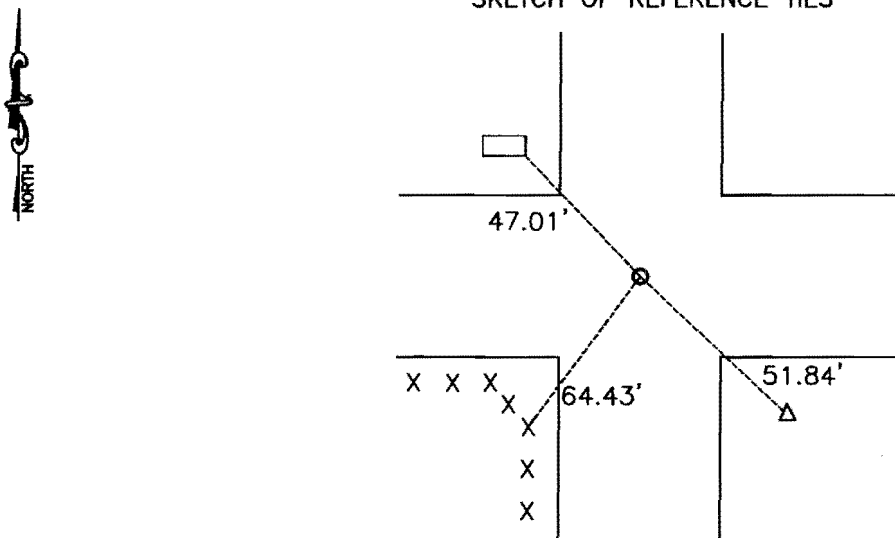
At the corner location shown on the sketch:

On MAY 16, 2007 found a 3/4" IRON PIPE
DATE

left monument as found, lowered monument, removed monument (explain)

On _____ placed a _____
DATE

SKETCH OF REFERENCE TIES



Minnesota State Plane Coordinate
System Murray County Datum
NAD83 (1996)
N: 105595.834
E: 447896.384

NAIL AND SURVEY MARKER IN FENCE POST SOUTHWEST 64.43'
TOP CENTER OF PEDESTAL SOUTHEAST 51.84'
SOUTHEAST CORNER OF POWERBOX NORTHWEST 47.01'

Statement of evidence relative to this corner location is on back of page.

I hereby certify that this document and the data contained herein was prepared by me or under my direct supervision.

[Signature] 8/11/08
SIGNATURE DATE

Registration No. 43844

Land Surveyor, Professional Engineer
 County Surveyor, County Engineer

OFFICE OF THE COUNTY RECORDER
County of _____

I hereby certify that this document was filed in the Co. Recorders office at _____ .M on the _____ day of _____ A.D. 20 _____

County Recorder [Signature]
By OCT 22 2008, Deputy

DOCUMENT NO. _____

Statement of Evidence

In September 1866, J. W. Bishop did the original subdivision of the township.

On May 16, 2007 Buechel-Moseng Land Surveying found an unrecorded $\frac{3}{4}$ inch iron pipe in the center of the road to the east, north, and south. The road to the west is a minimum maintenance road.